

FIG. 1A  
Prior Art

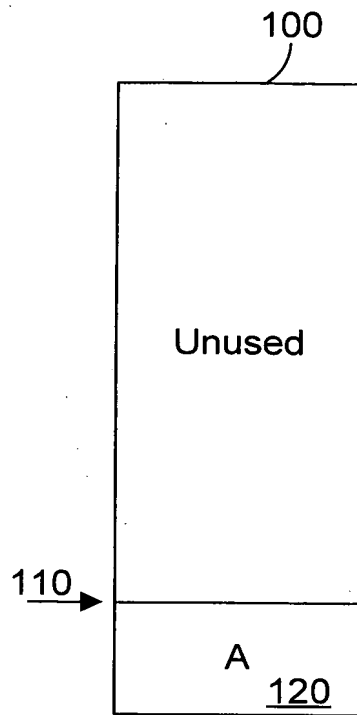


FIG. 1B  
Prior Art

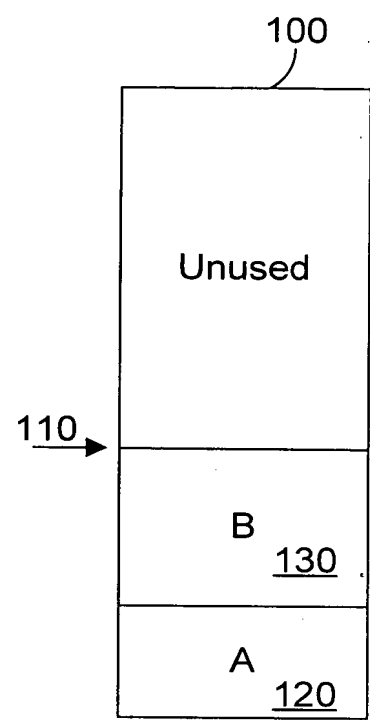


FIG. 1C  
Prior Art

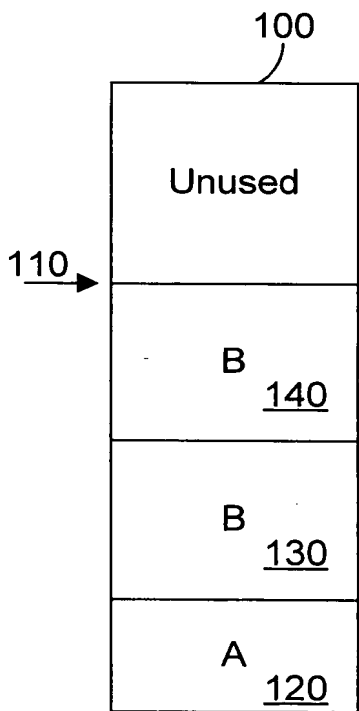


FIG. 1D  
Prior Art

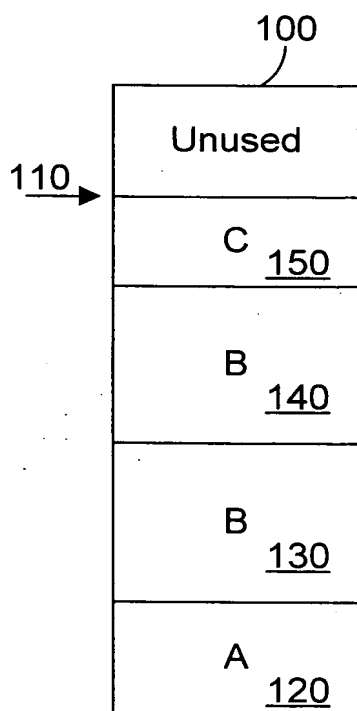


FIG. 1E  
Prior Art

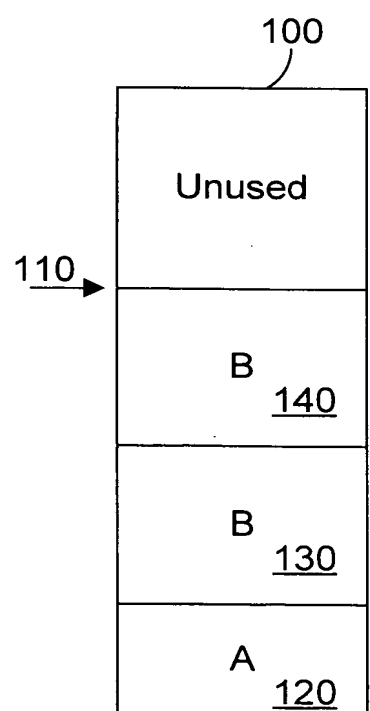


FIG. 1F  
Prior Art

FIG. 1A-1F

```

C++
A() {
    Square k;
    ...
}

```

FIG. 2A Prior Art

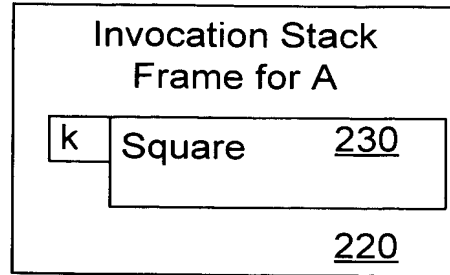


FIG. 2B Prior Art

```

Java
A() {
    ...
    Square k = new Square();
    ...
}

```

FIG. 3A Prior Art

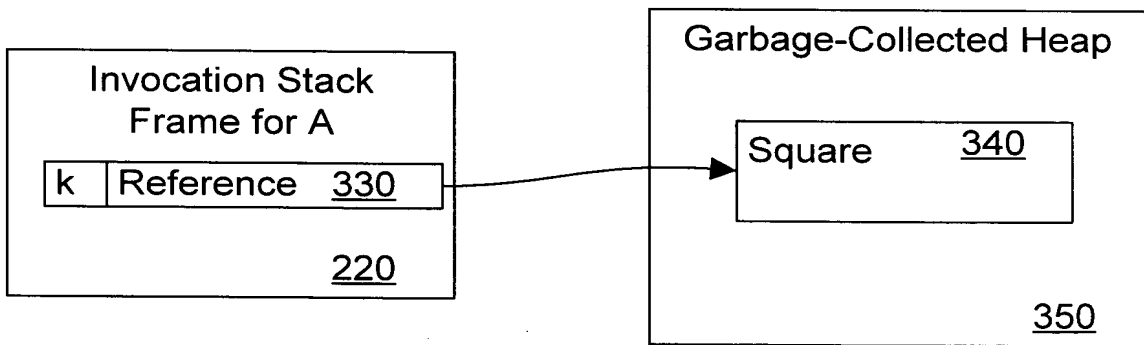


FIG. 3B Prior Art

FIG. 3C Prior Art

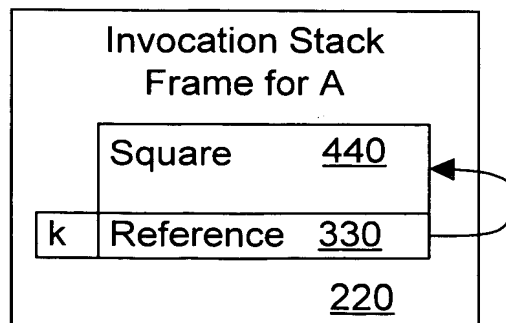


FIG. 4 Prior Art

FILED OCT 19 2000

```
A() { NO ESCAPE
  :
  :
  Square k = new Square();
  :
  :
}
```

FIG. 5A Prior Art

```
static Square classVar;
A() { GLOBAL ESCAPE
  :
  :
  Square k = new Square();
  classVar = k;
  :
  :
}
```

FIG. 5B Prior Art

```
Square A() { ARG ESCAPE
  :
  :
  Square k = new Square();
  return k;
  :
  :
}
```

FIG. 5C Prior Art

```
A(List L) { ARG ESCAPE
  :
  :
  Square k = new Square();
  L.addToList(k);
  :
  :
}
```

FIG. 5D Prior Art

FILED OCT 27 2000

FIG. 6

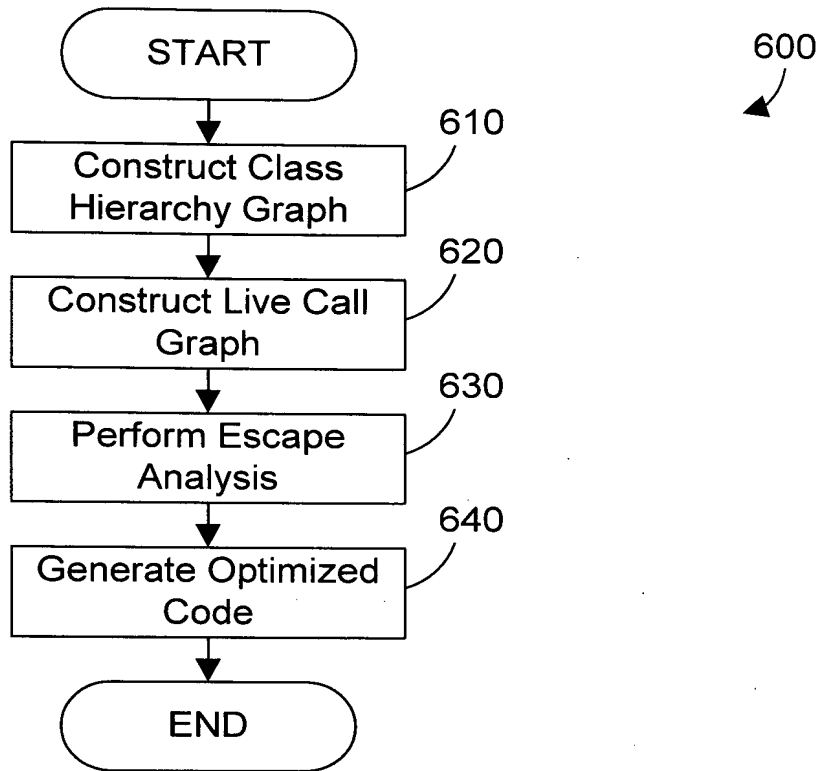


FIG. 6 Prior Art

630

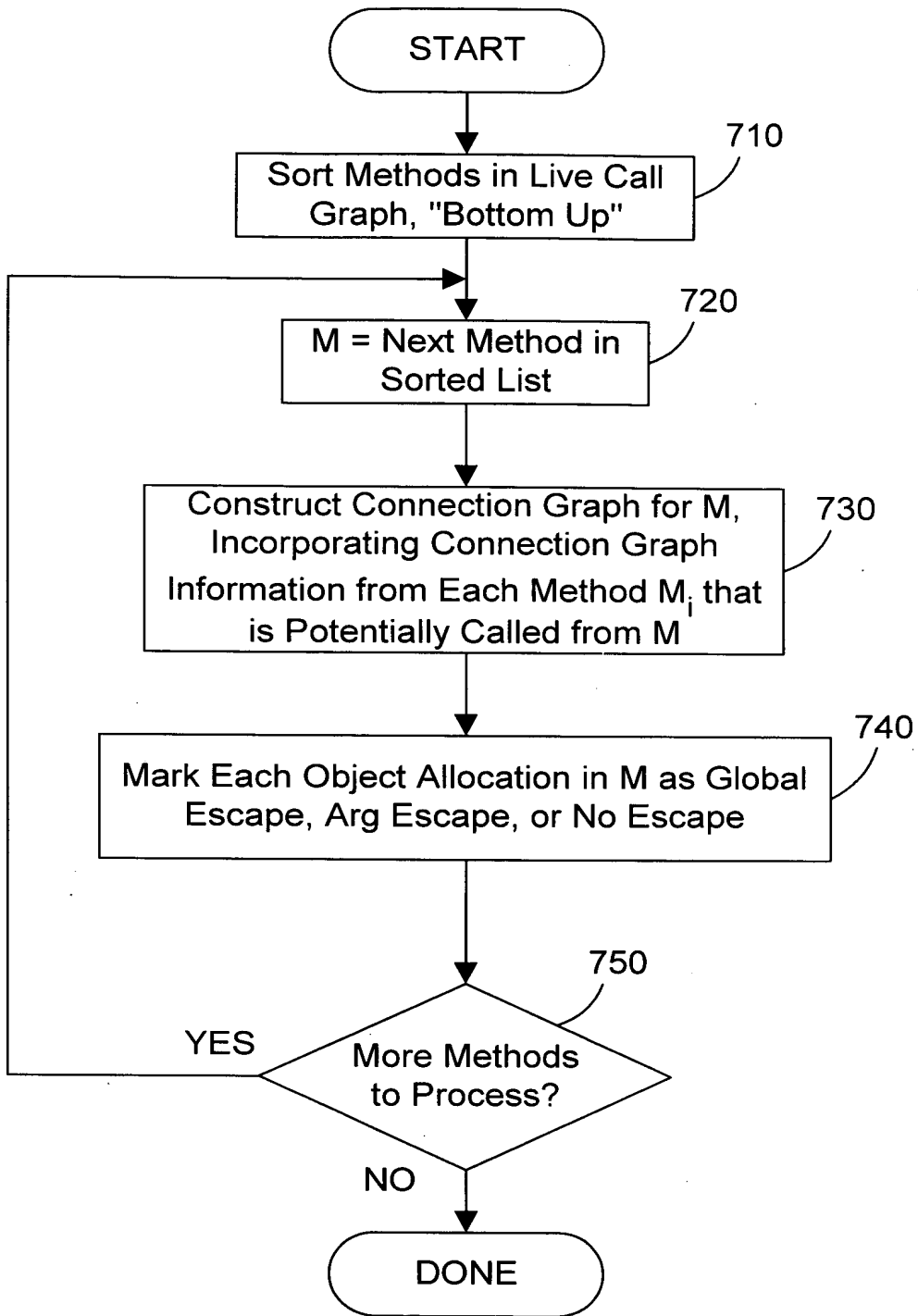


FIG. 7

FIG. 7 Prior Art

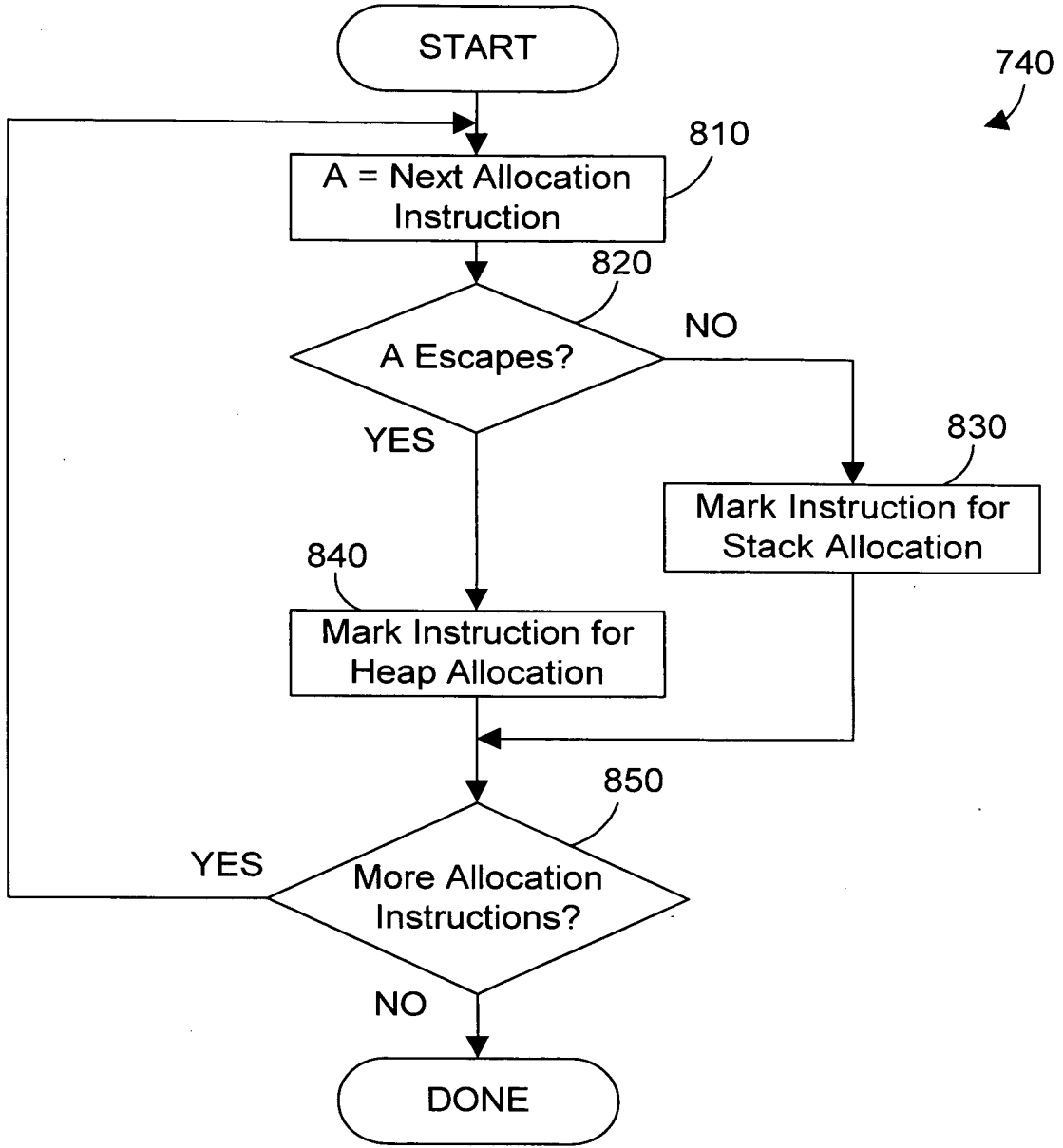


FIG. 8

FIG. 8

Prior Art

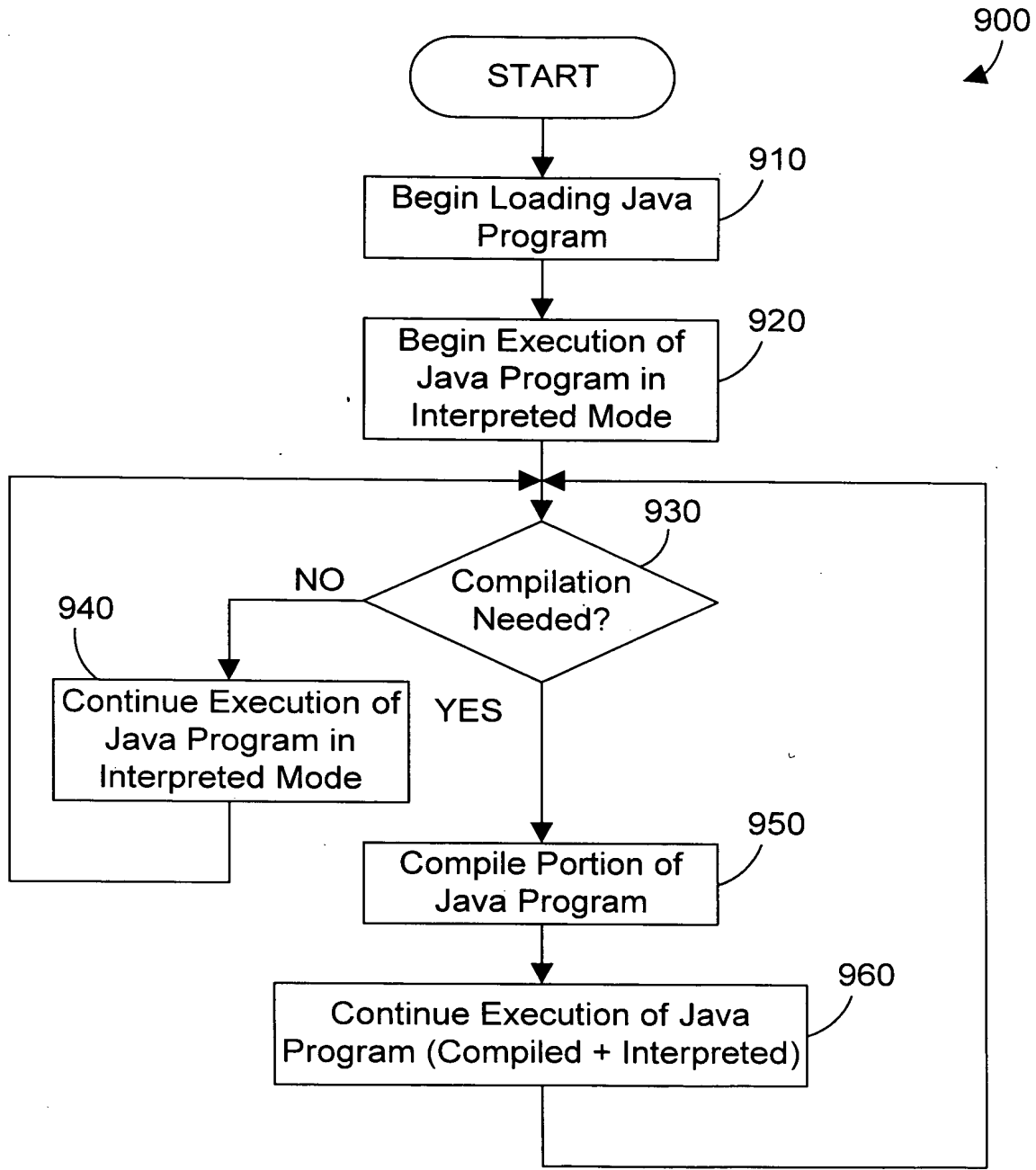


FIG. 9

FIG. 9 Prior Art

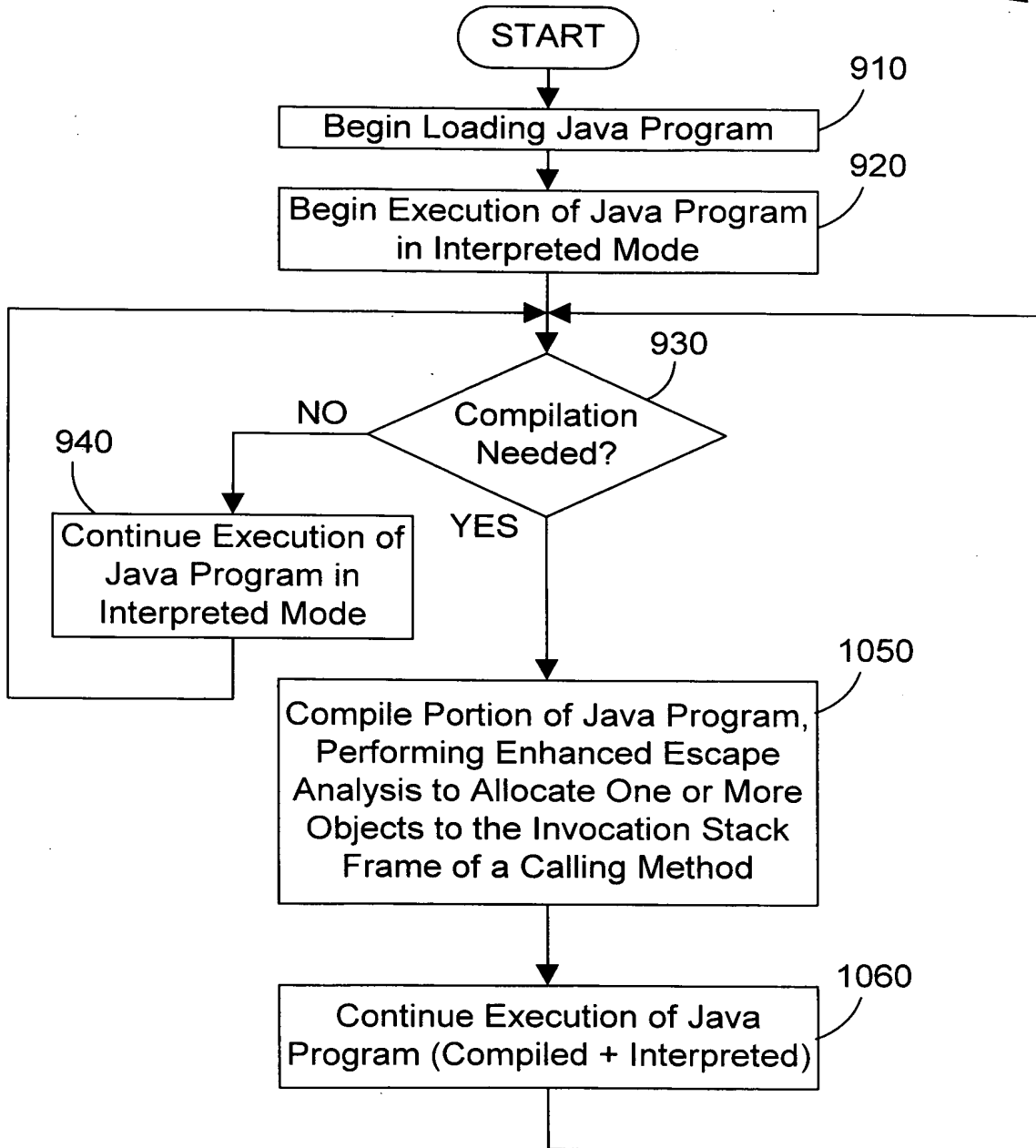
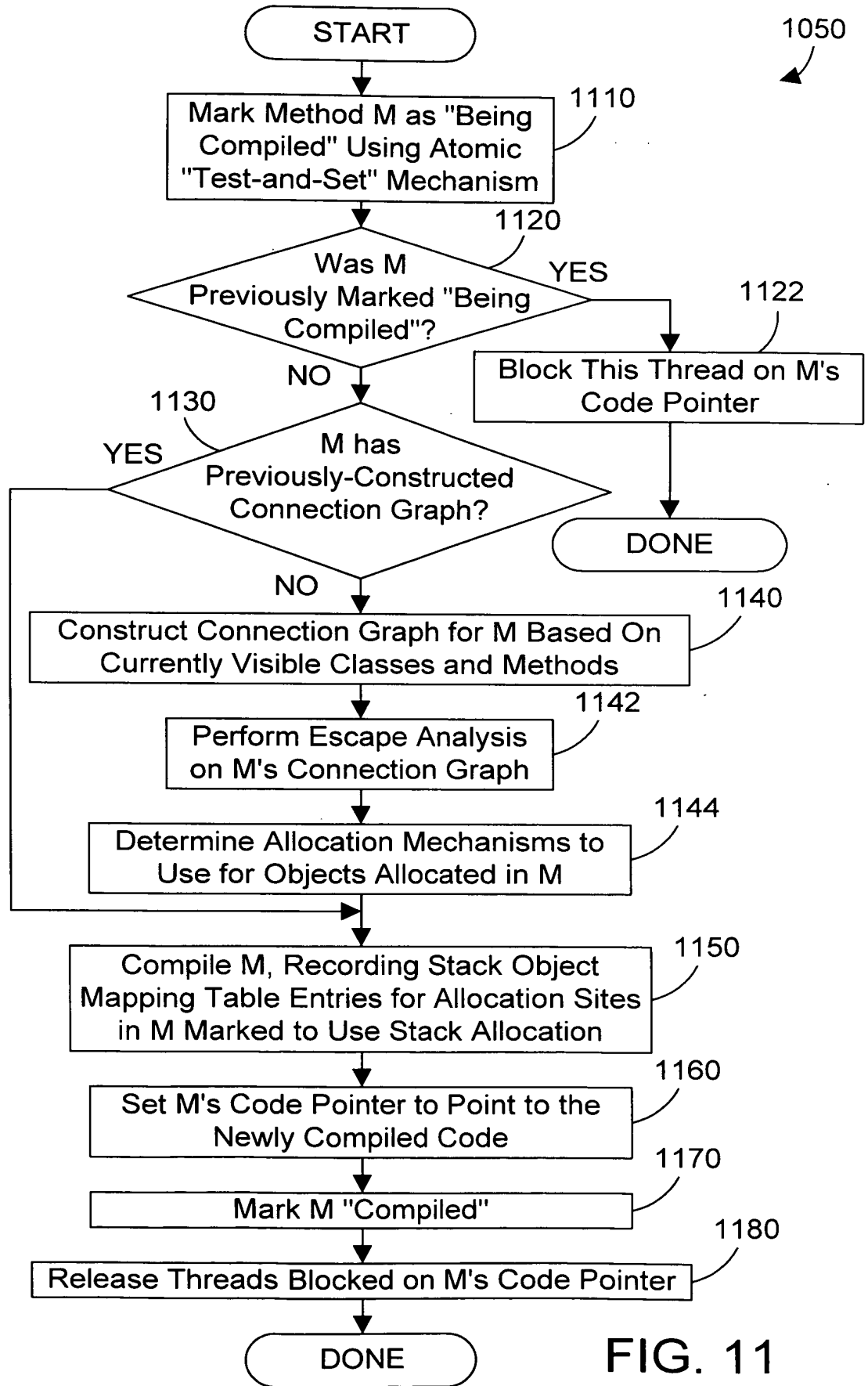


FIG. 10

FIG. 10





1050

FIG. 11

FIG. 11

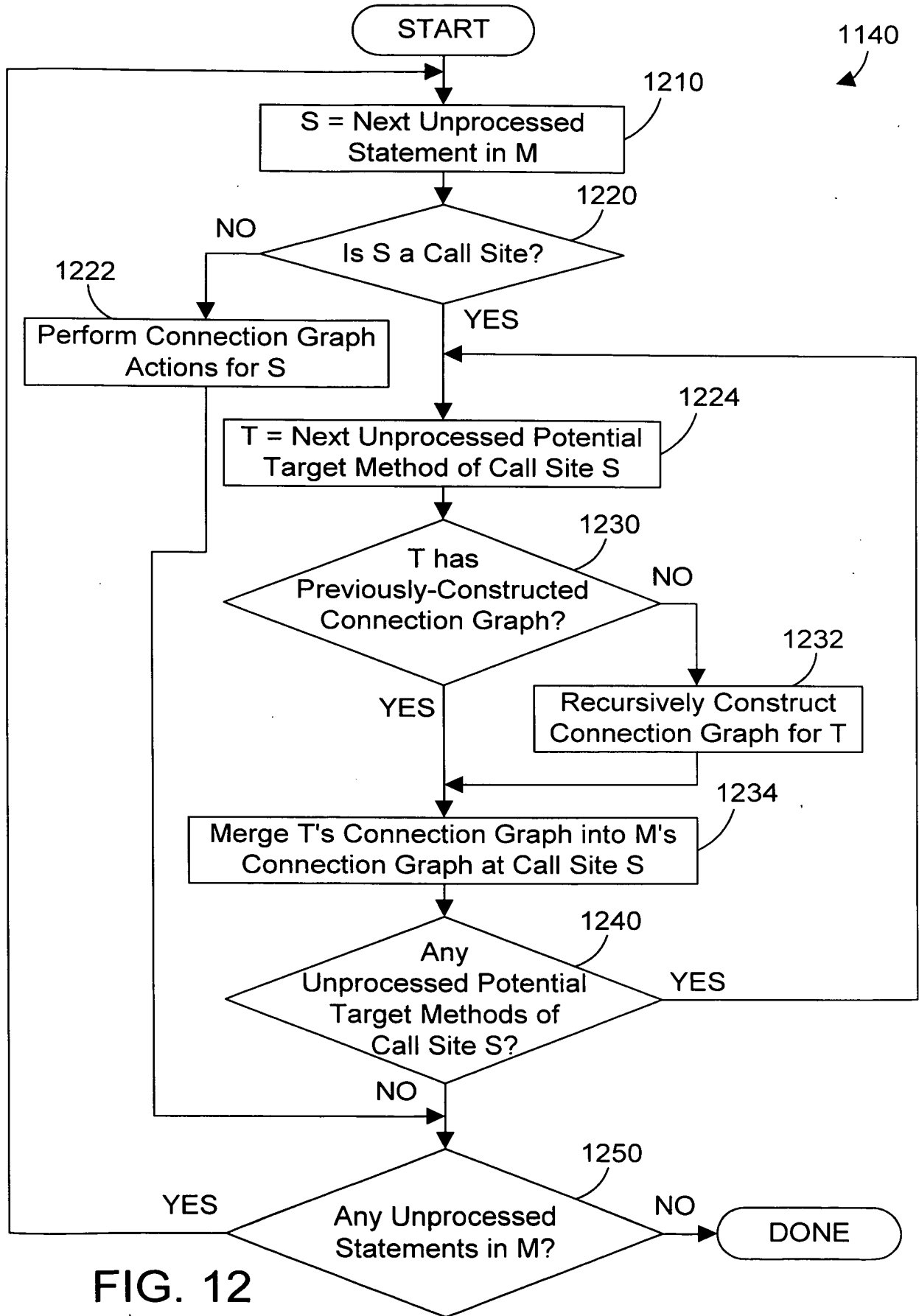


FIG. 12

FIG. 12

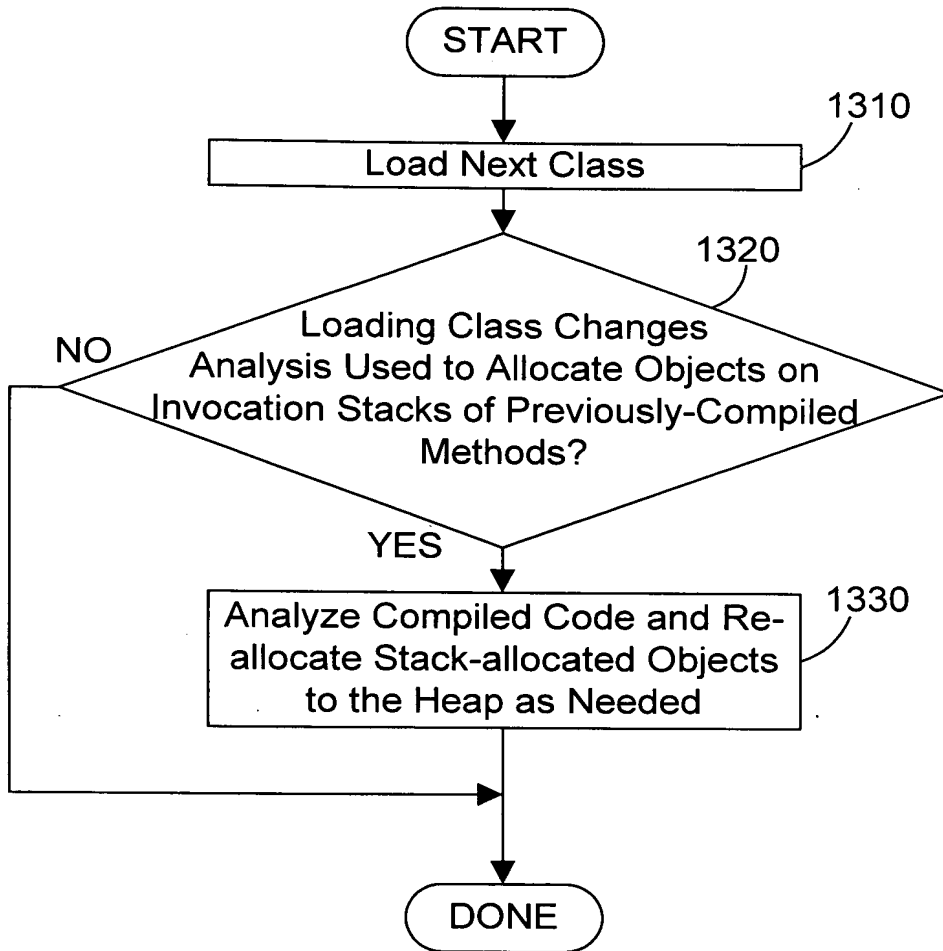


FIG. 13

FIG. 13



1470

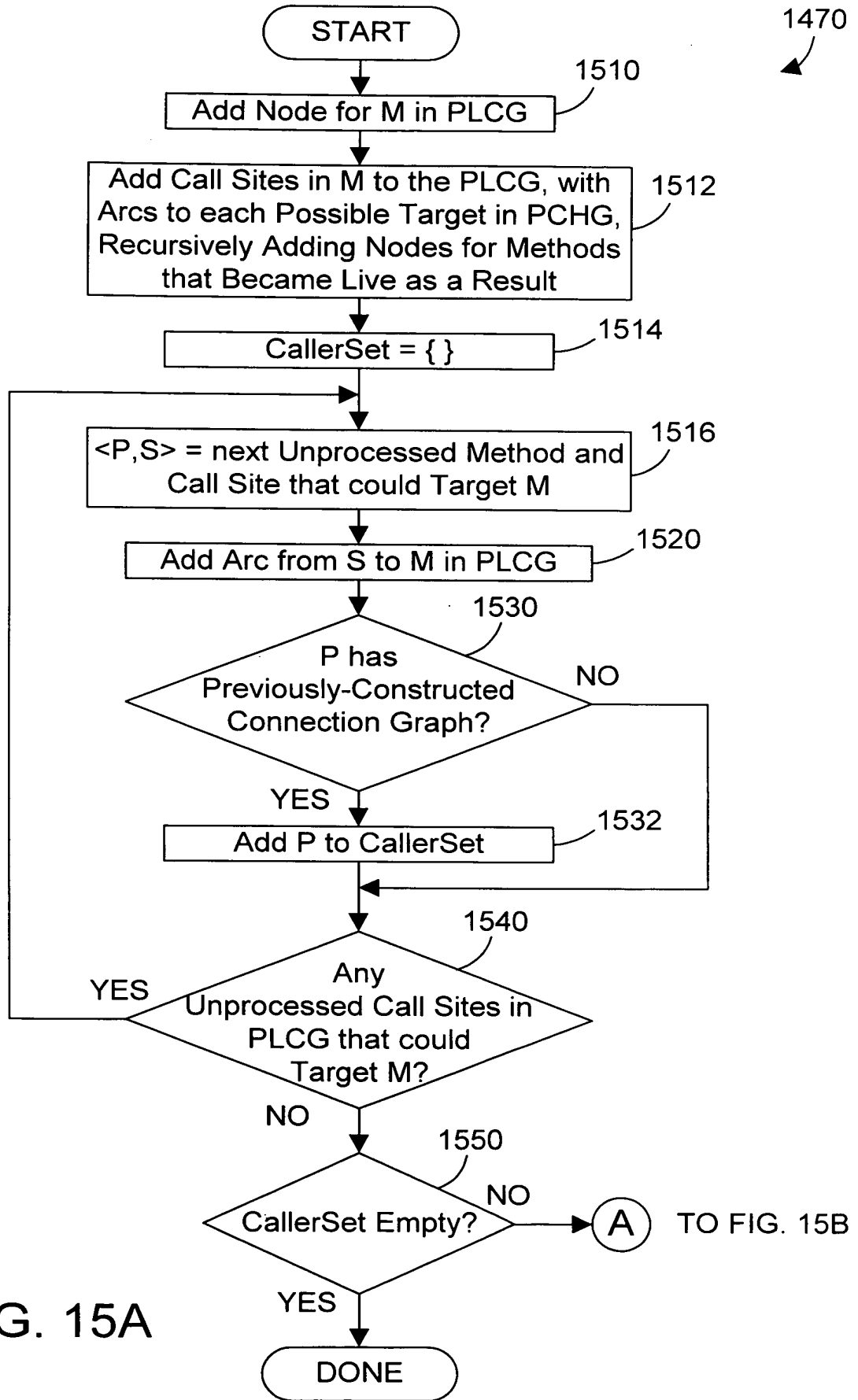


FIG. 15A

FIG. 15A

FIG. 15B

FROM FIG. 15A

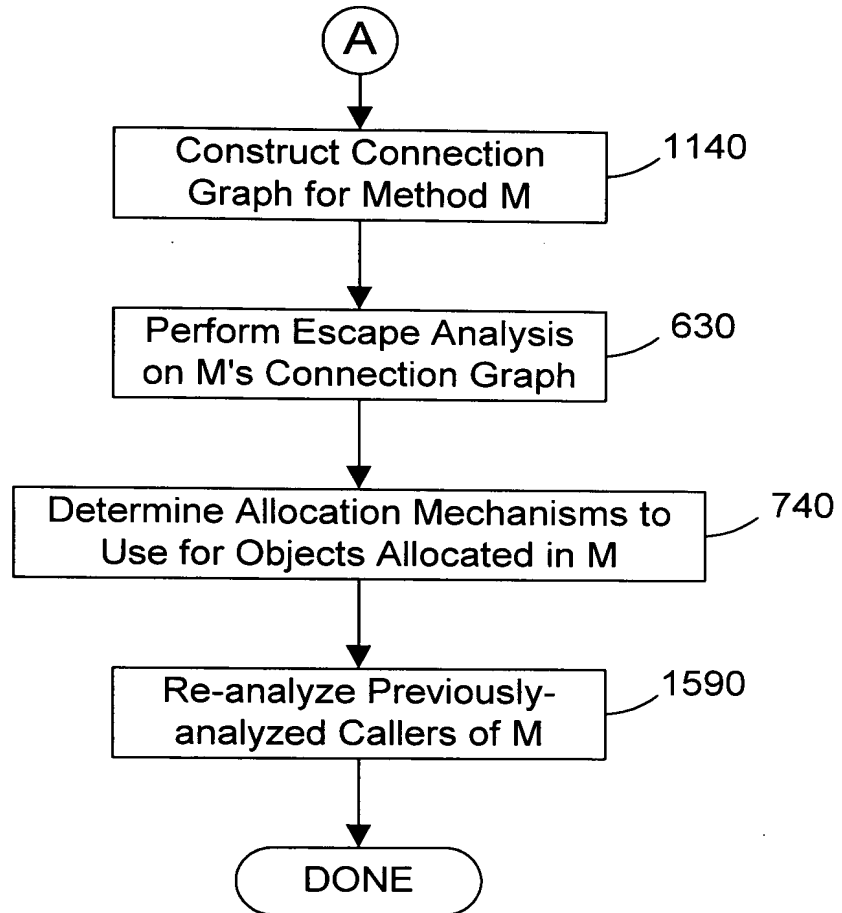


FIG. 15B

1590

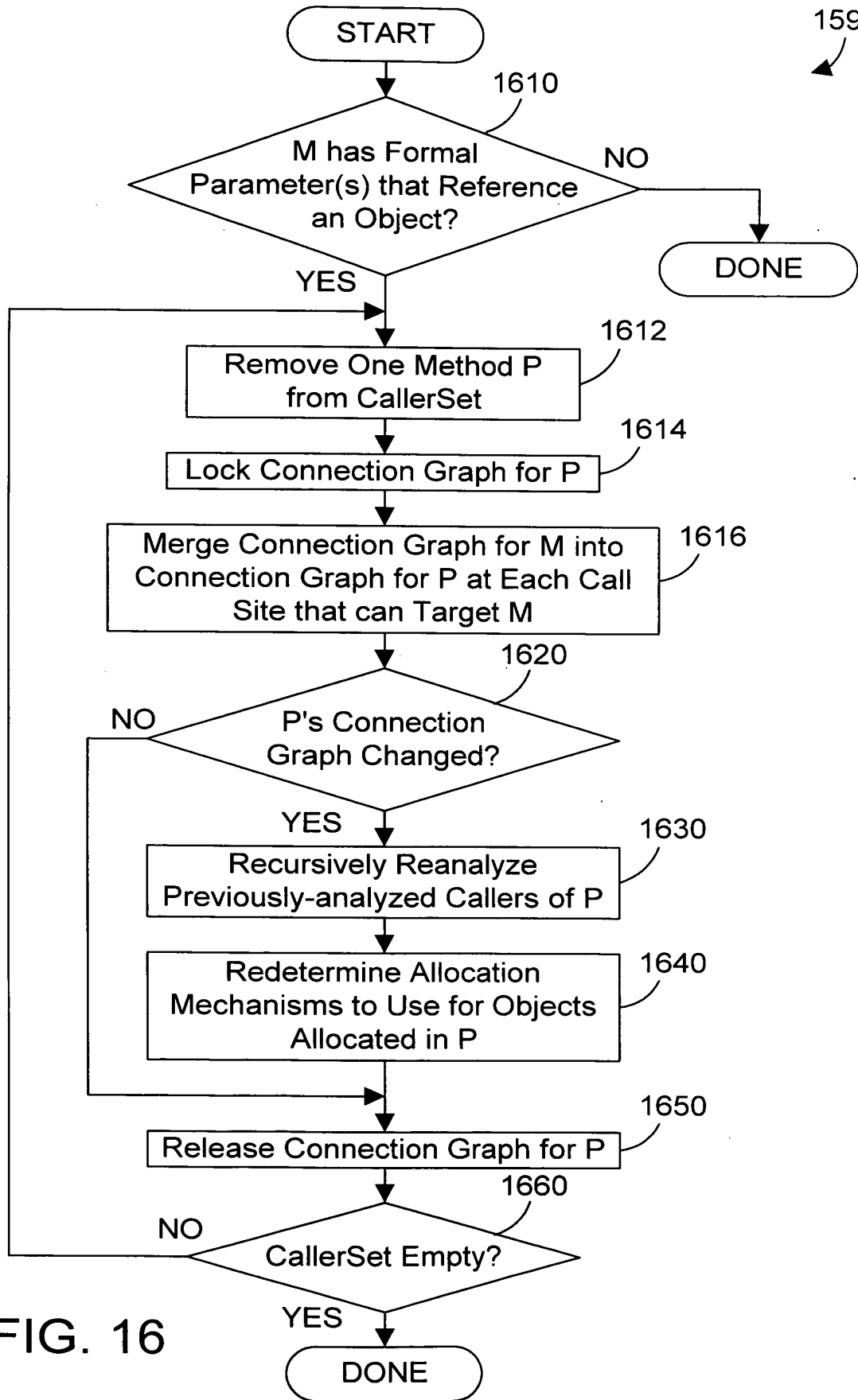


FIG. 16

FIG. 16 of 2000-0281

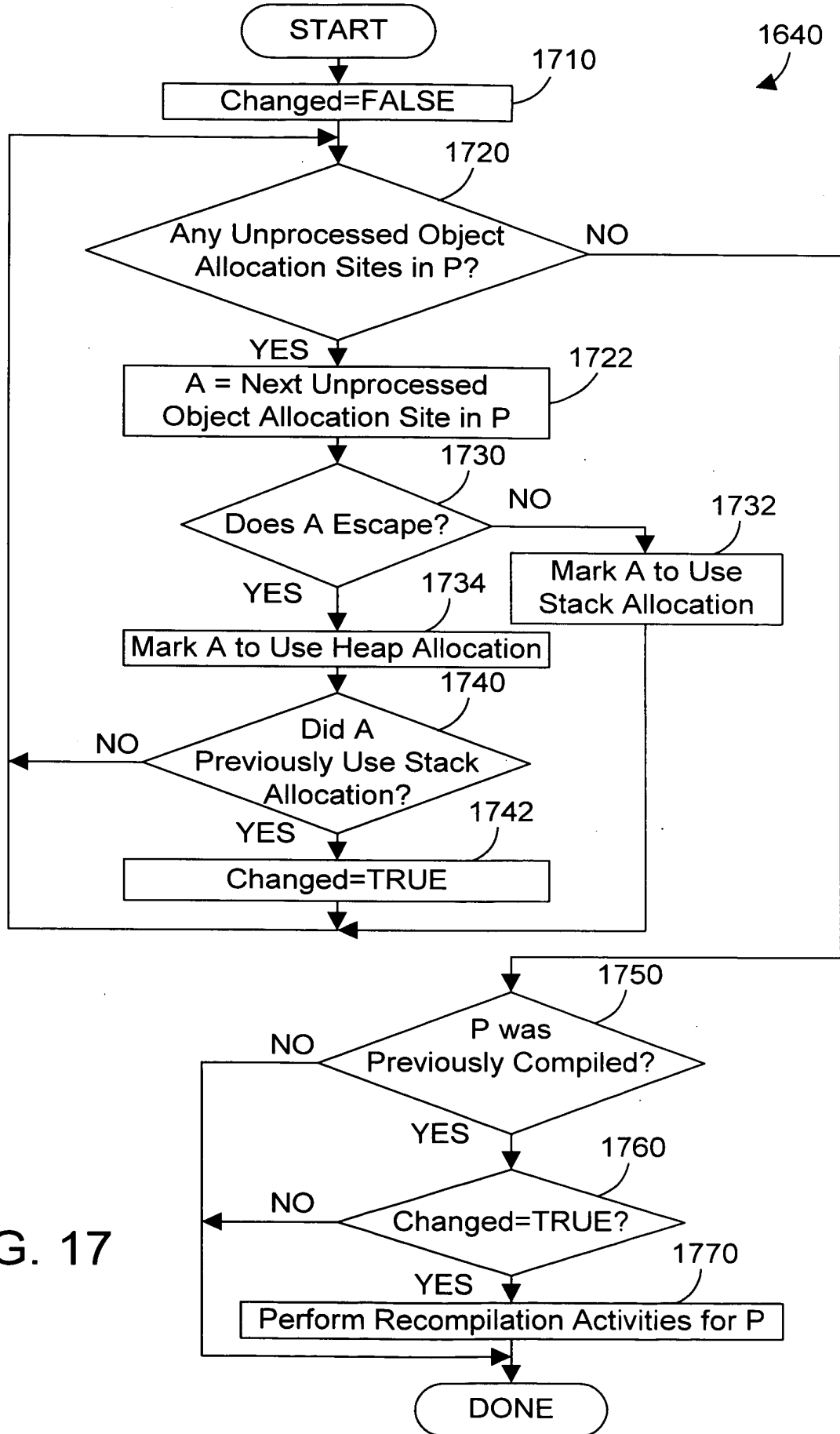


FIG. 17

FIG. 17 of 1640







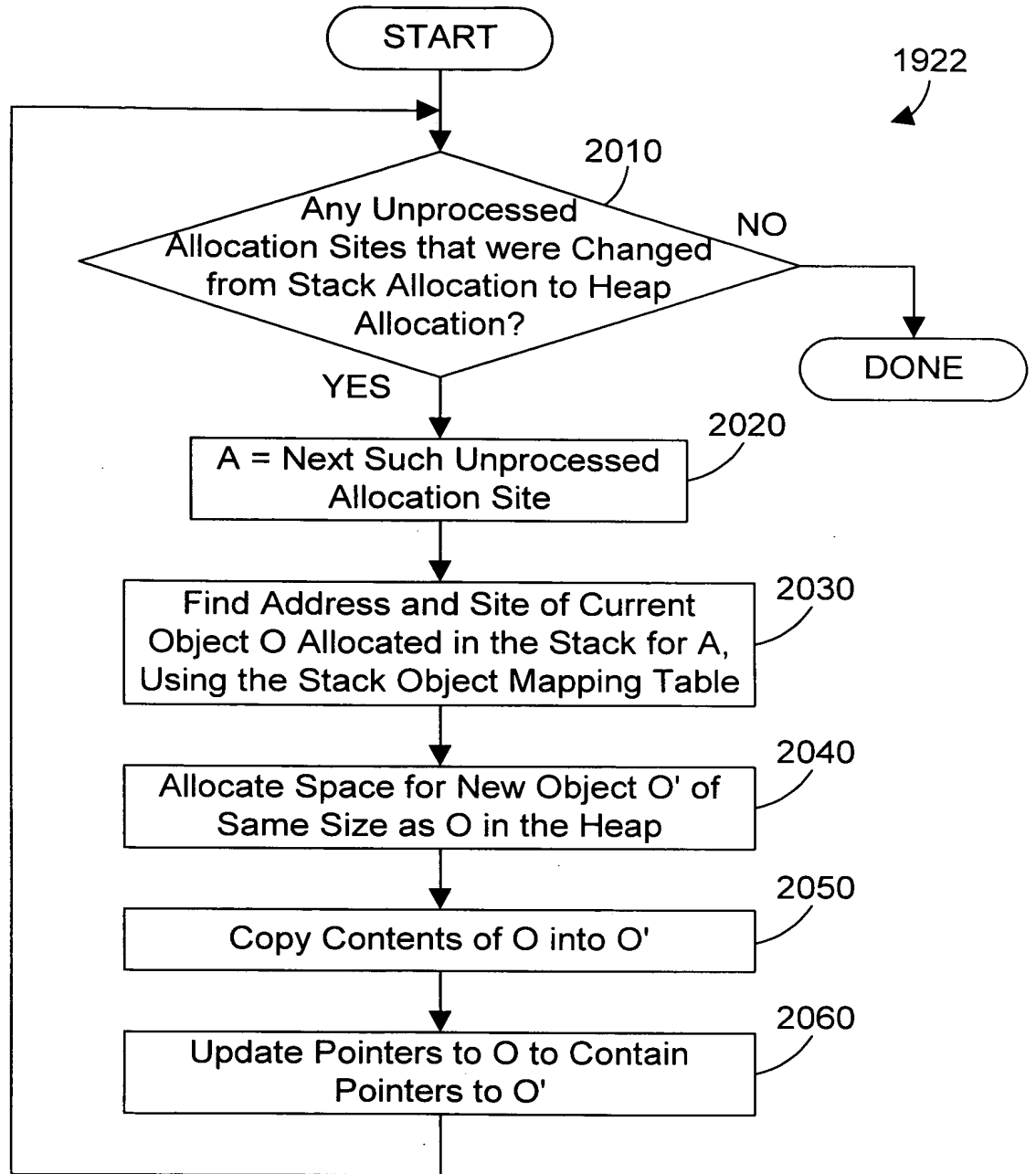


FIG. 20

100260 67921500

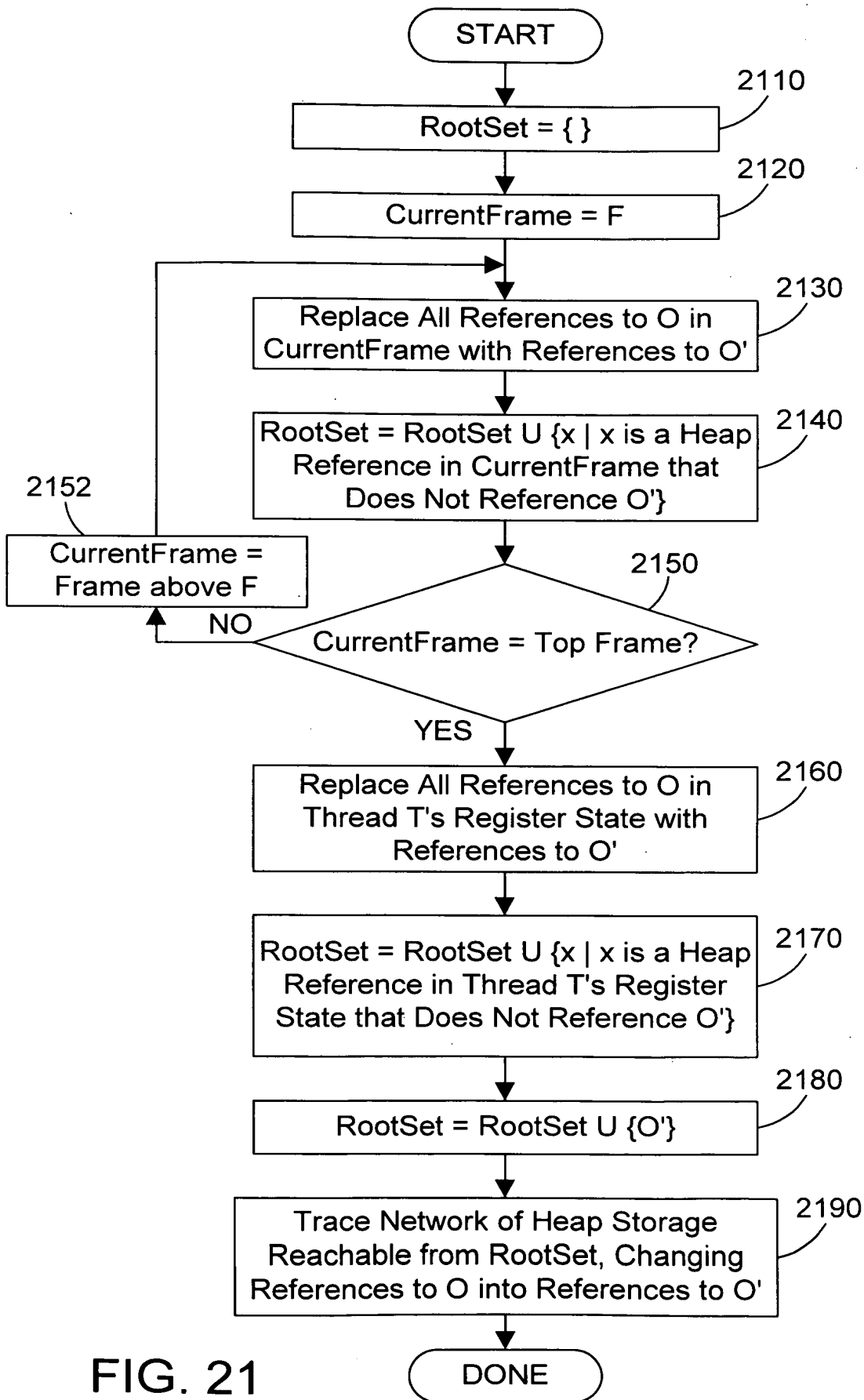


FIG. 21

FIG. 21

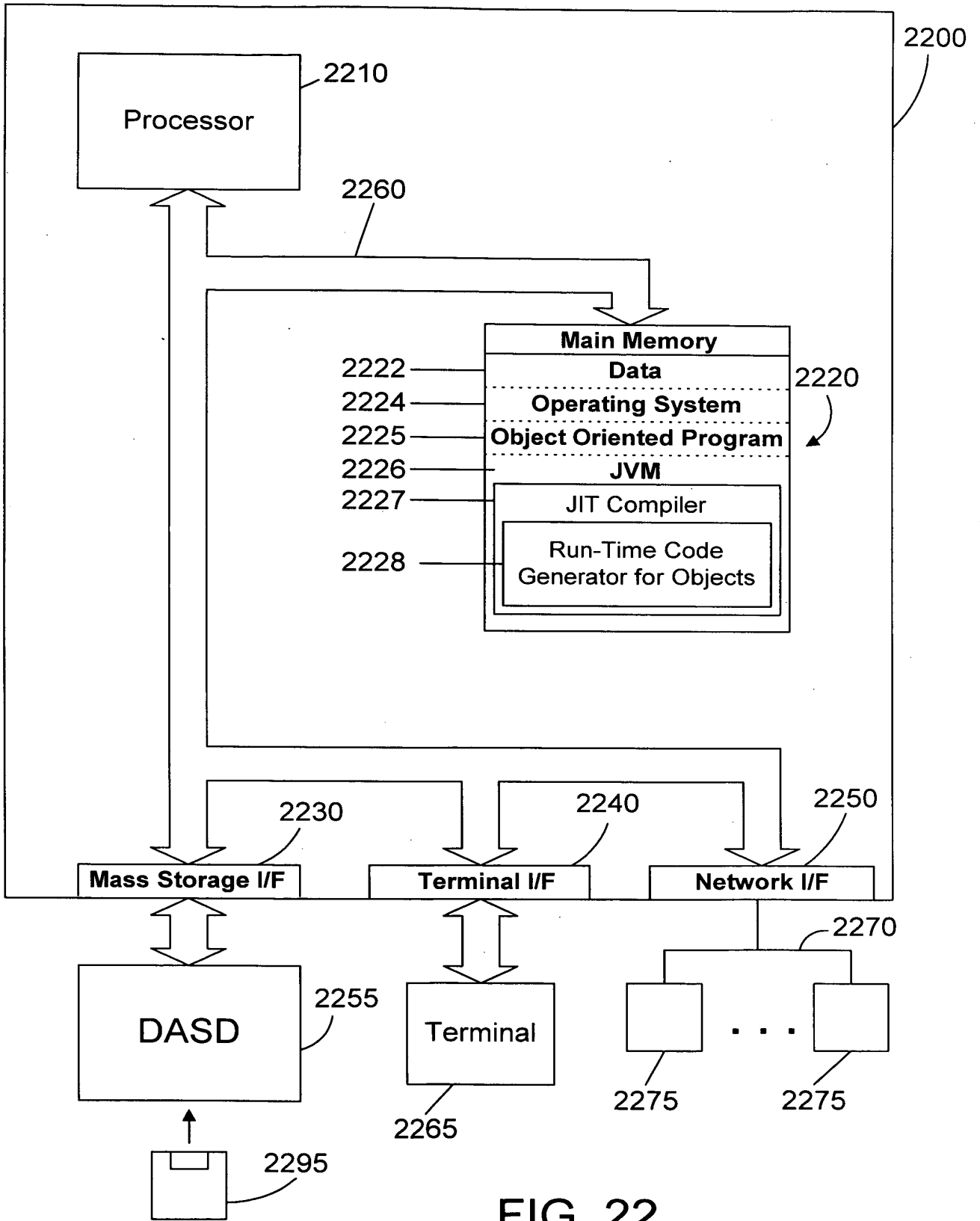


FIG. 22

FIG. 22



```
class ExampleClass {
    GeneralClass gCls;
    static void exampleMethod(int a, int b) {
        ComplexNumber cn = new ComplexNumber(a,b); //A1
        doSomeWork(cn);
        gCls.examine(cn);
    }
    static void doSomeWork(ComplexNumber x) {
        if (x.imagPart() < 0) {
            Class specClass = Class.forName("SpecificClass");
            gCls = (GeneralClass)specClass.newInstance();
        } else {
            gCls = new GeneralClass(); //A2
        }
    }
}

public static void main(String[] argr) {
    int i, j;
    for (i=0;i<100;i++) {
        for (j=0;j<100;j++) {
            exampleMethod(i,j);
        }
    }
    exampleMethod(-1,-1);
}
}
```

FIG. 26

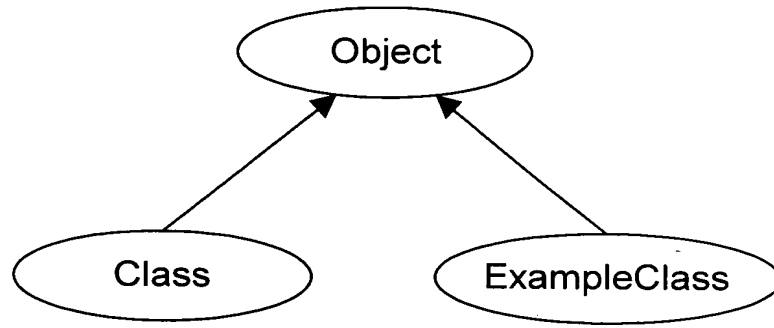


FIG. 27

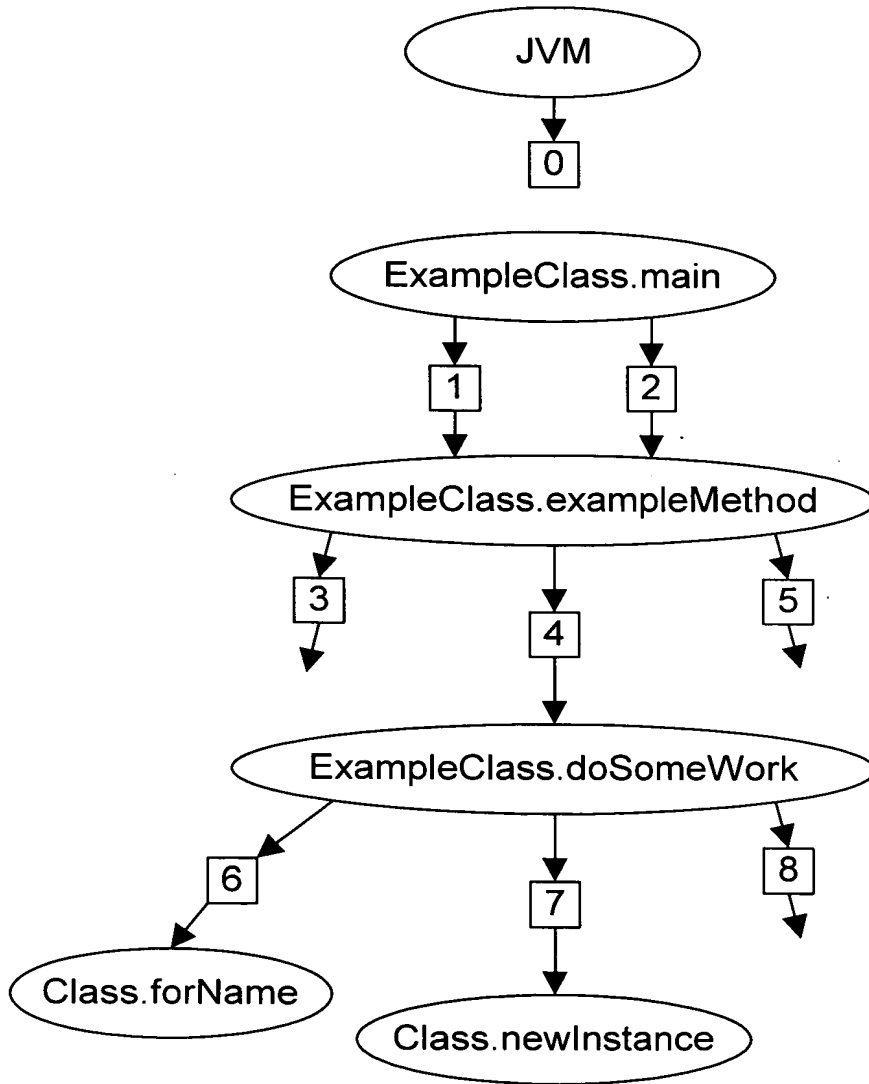


FIG. 28

FIG. 28



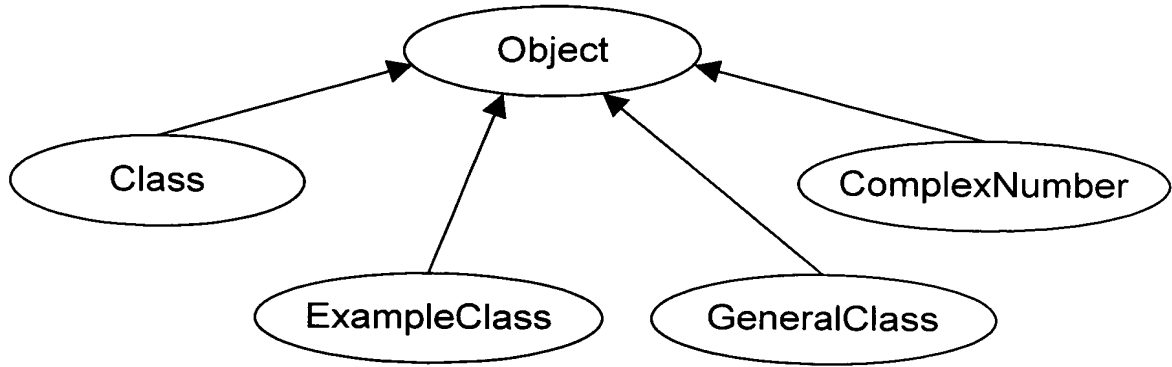


FIG. 29

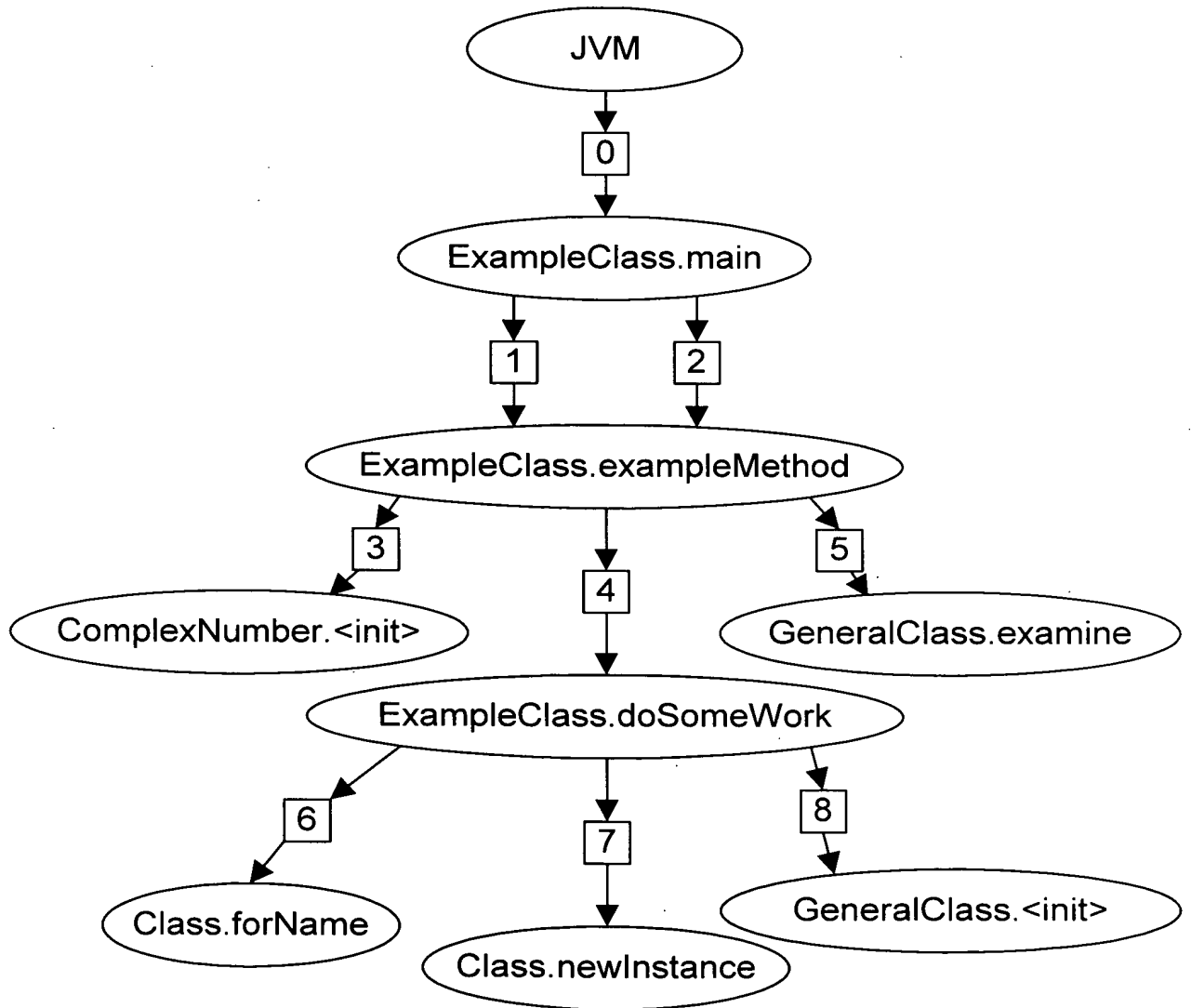
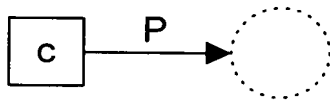


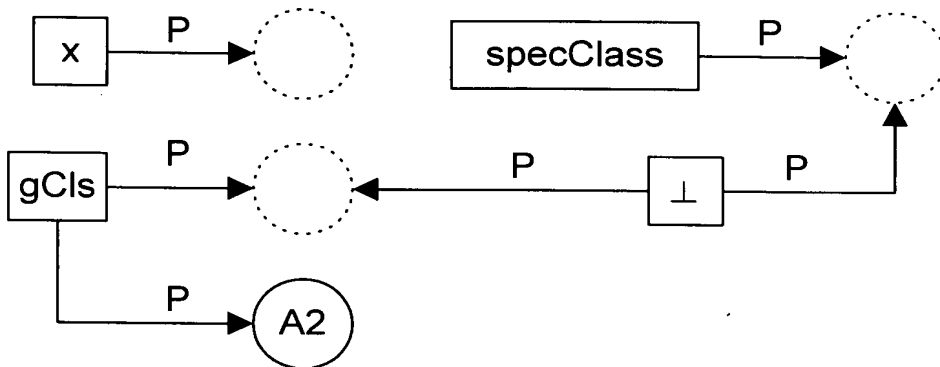
FIG. 30

FIGURE 29



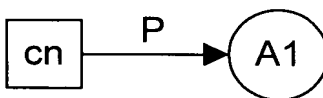
GeneralClass.examine()

FIG. 31



ExampleClass.doSomeWork()

FIG. 32



ExampleClass.exampleMethod()

FIG. 33

Site	Size	Offset
A1	8	64

FIG. 34

TABLE OF FIGS. 31-34

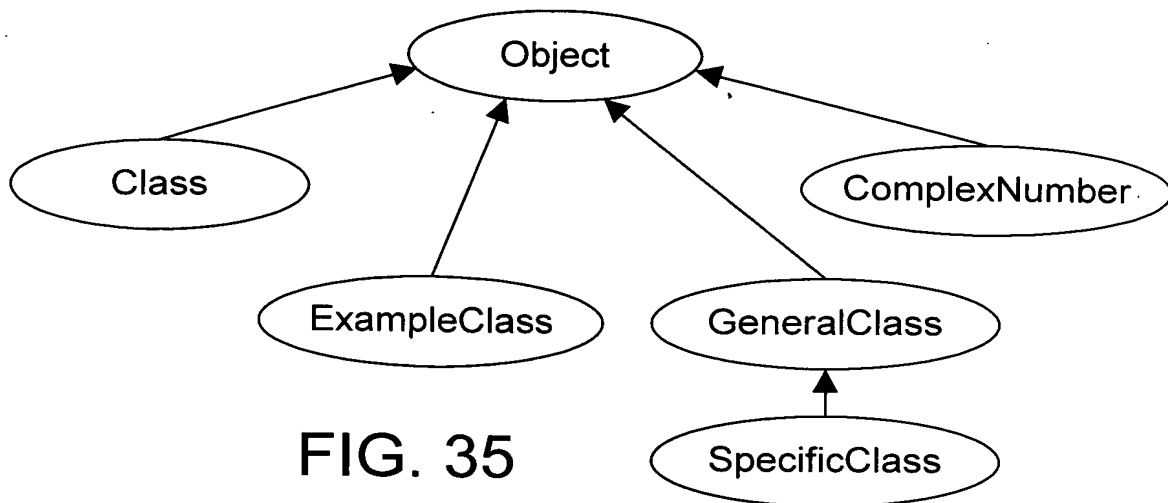
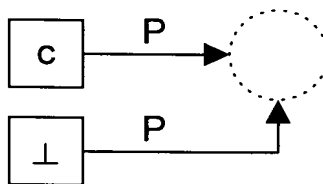
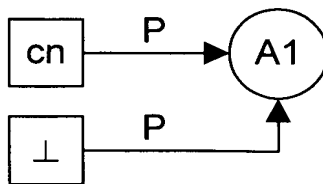


FIG. 35



GeneralClass.examine()

FIG. 36



ExampleClass.exampleMethod()

FIG. 37

FIG. 35

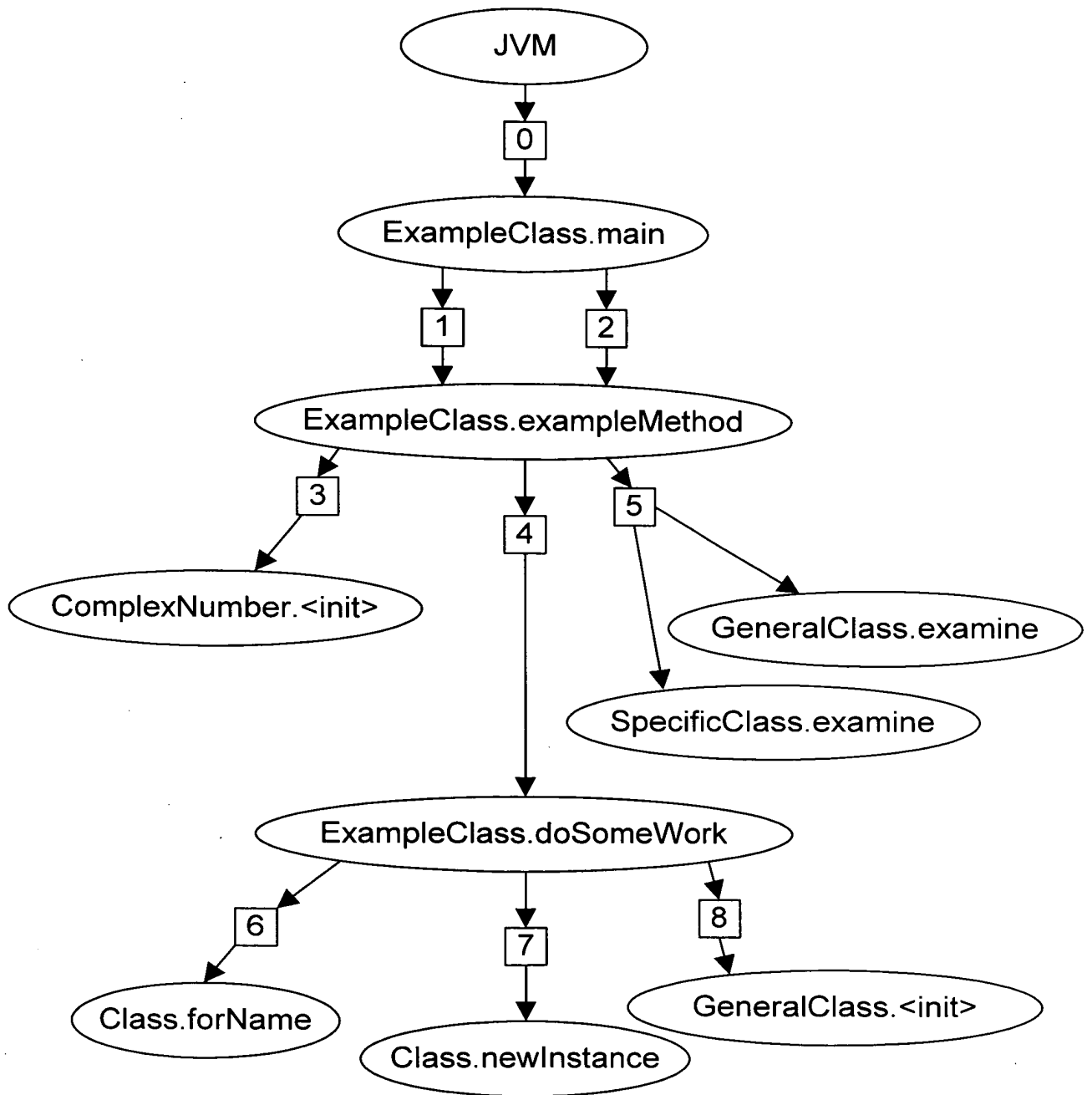


FIG. 38

FILED OCT 2 2000

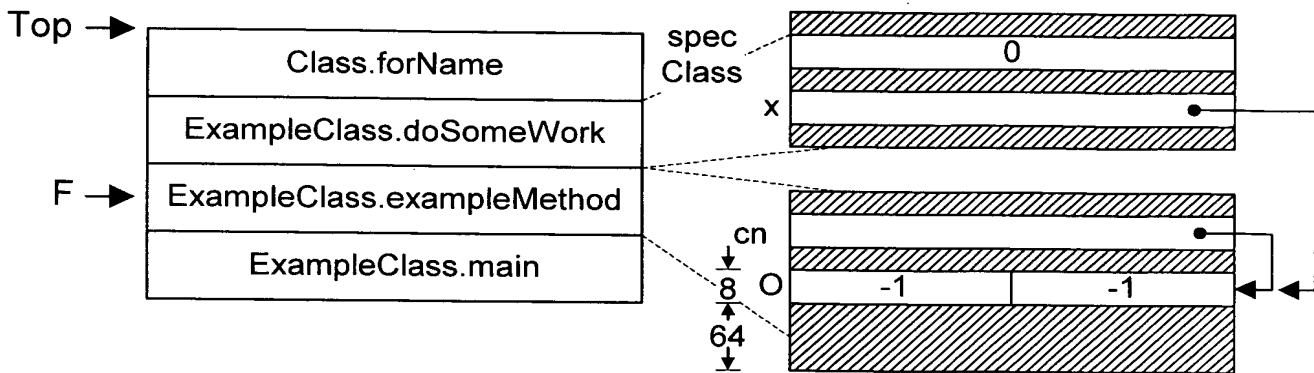


FIG. 39

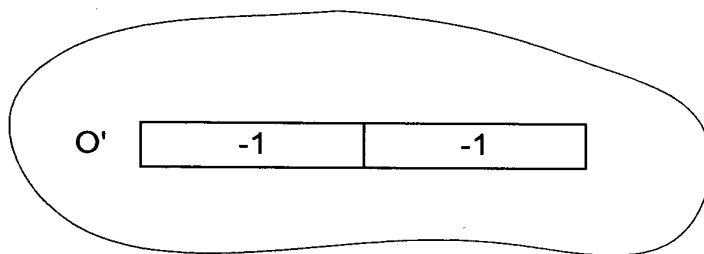


FIG. 40

FIG. 39 of 31

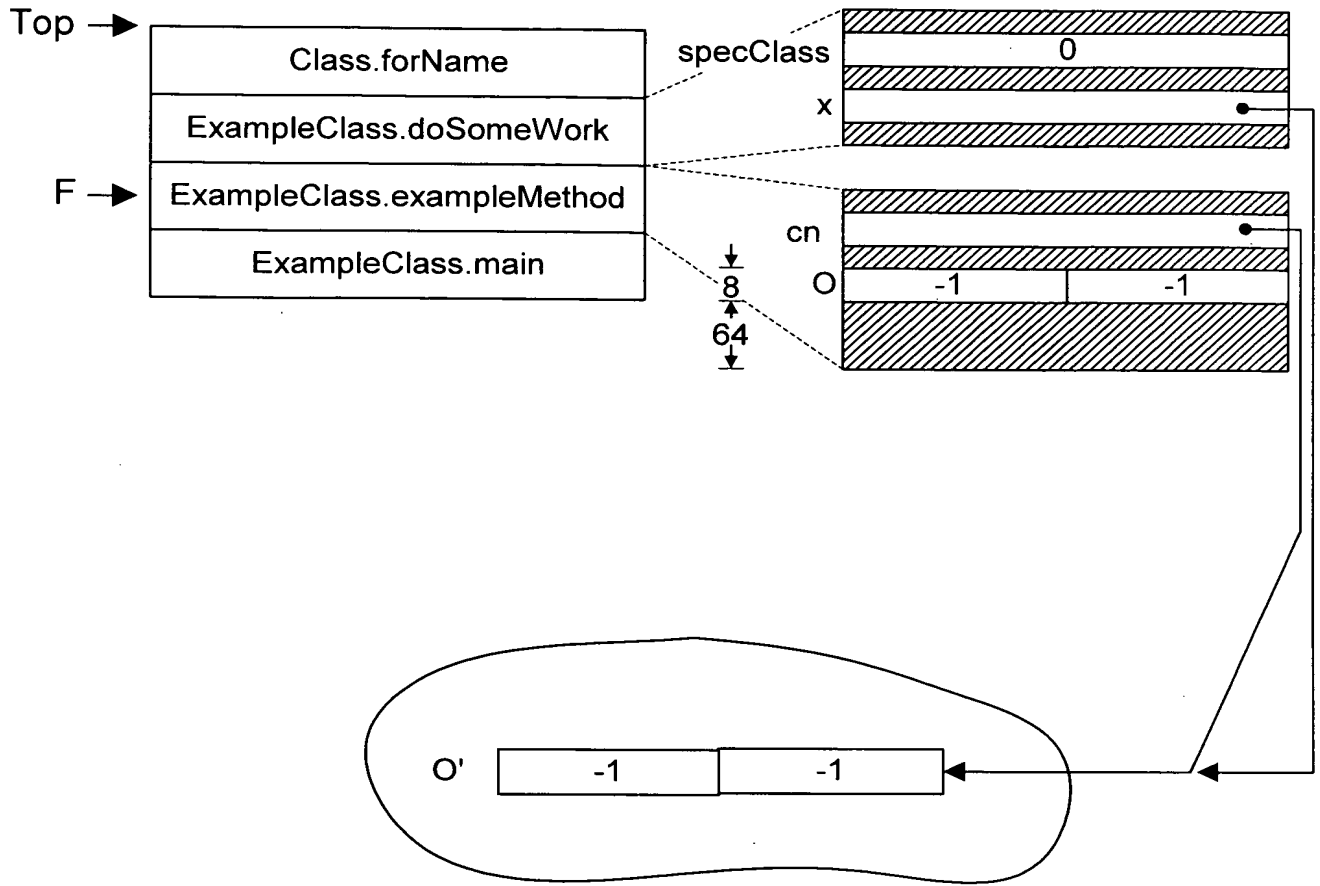


FIG. 41

FIG. 41